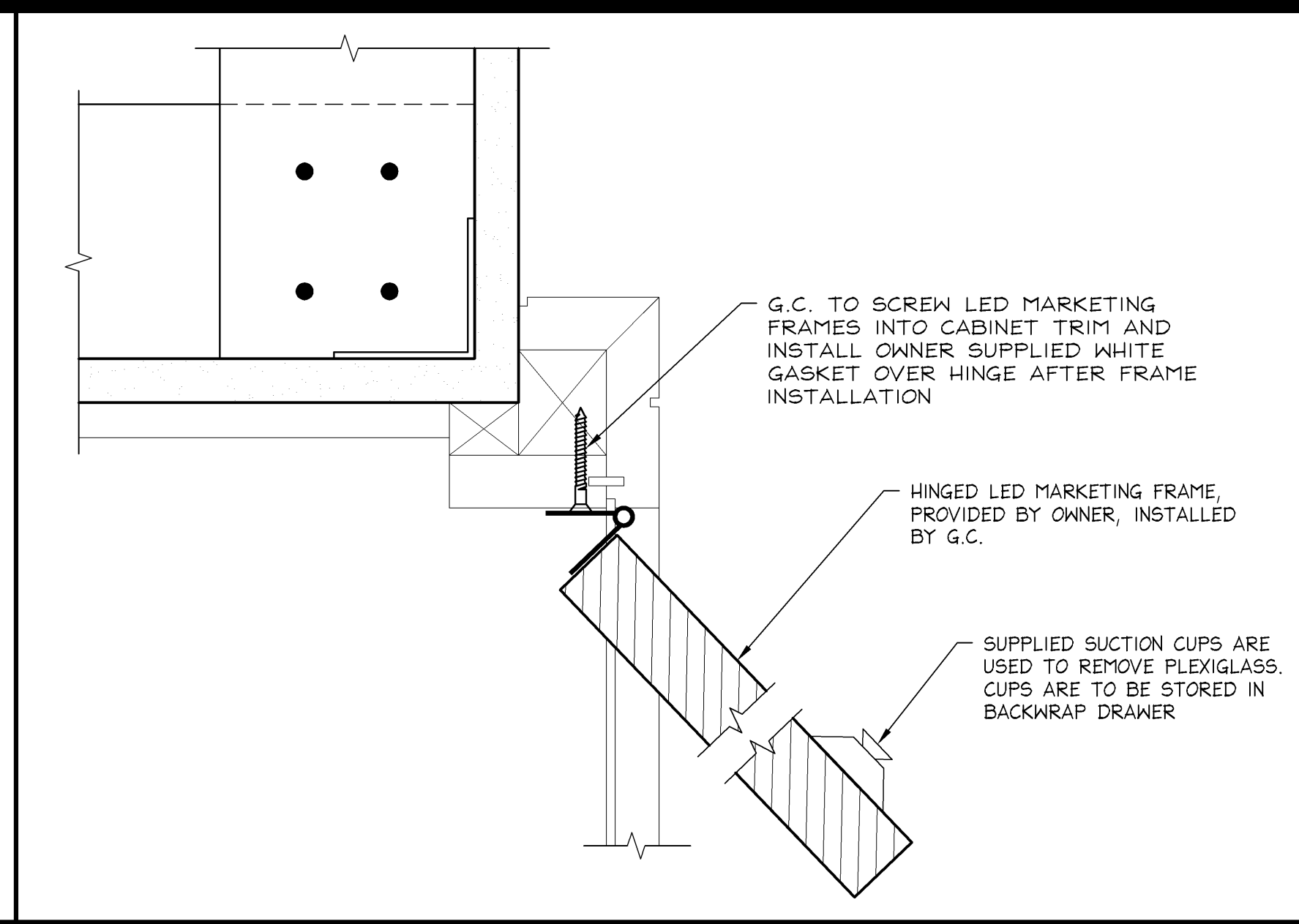
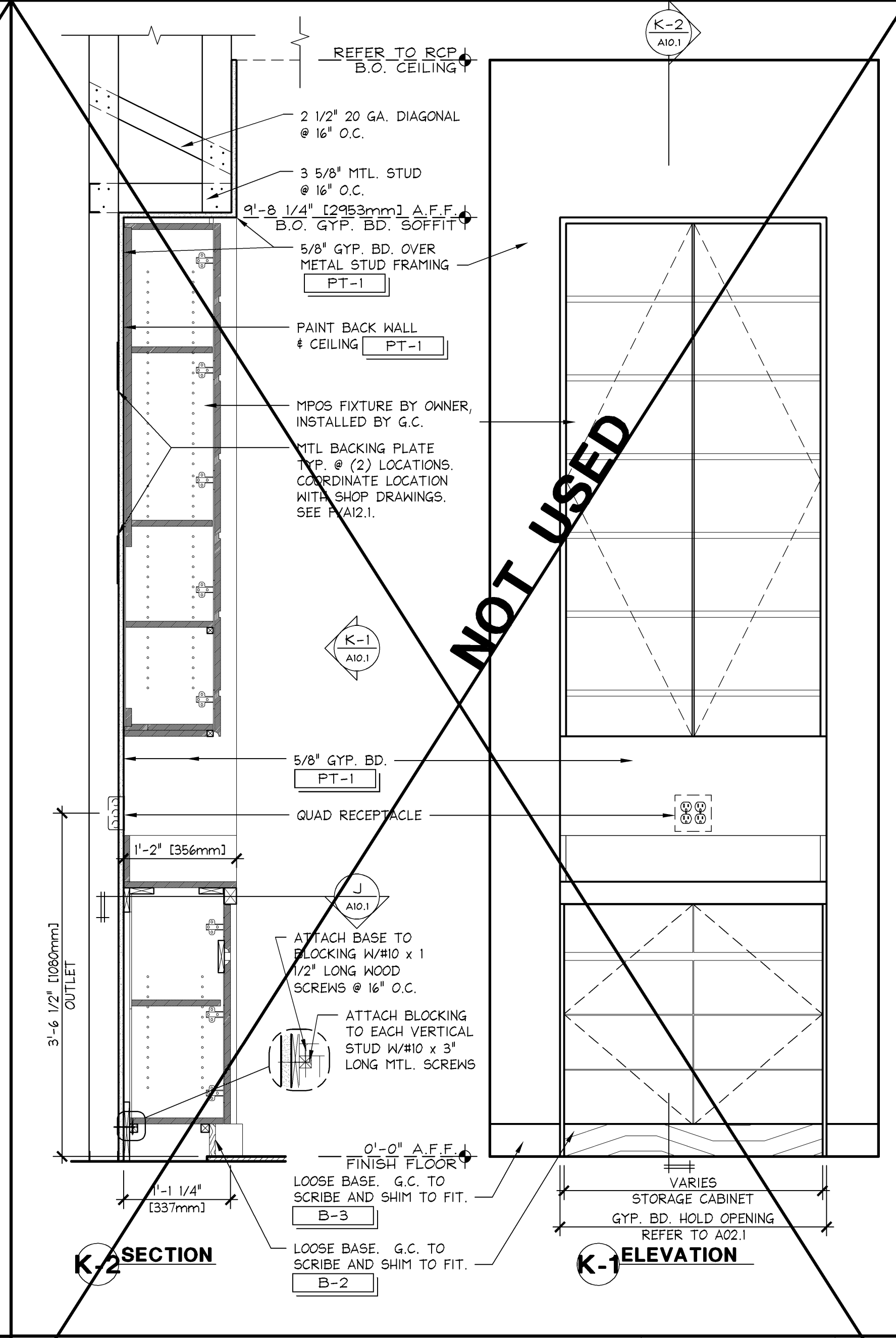
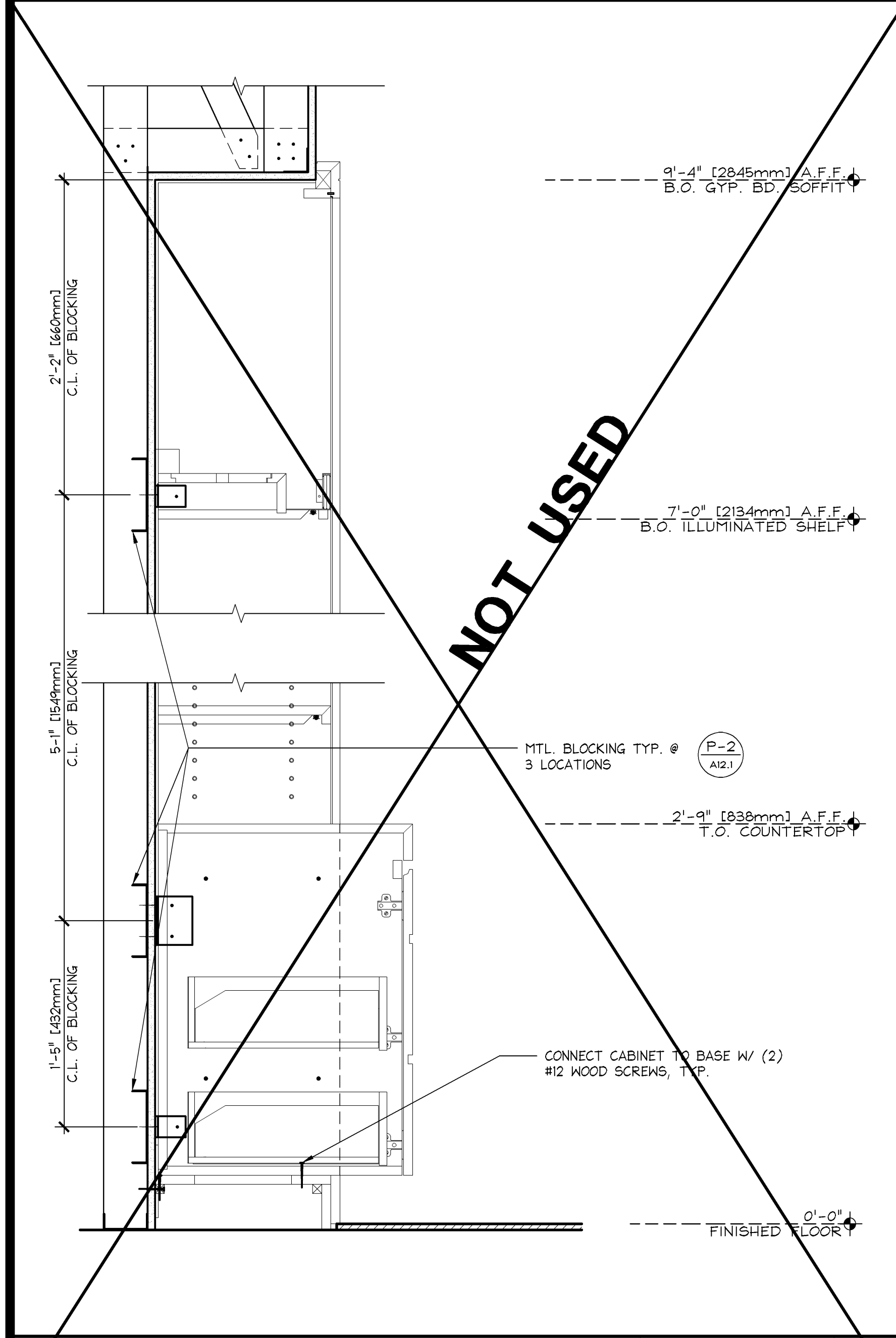


**CABINET TRIM DETAILS**  
6" ± 1'-0"  
42D-A101-800-DETL  
01.27.12

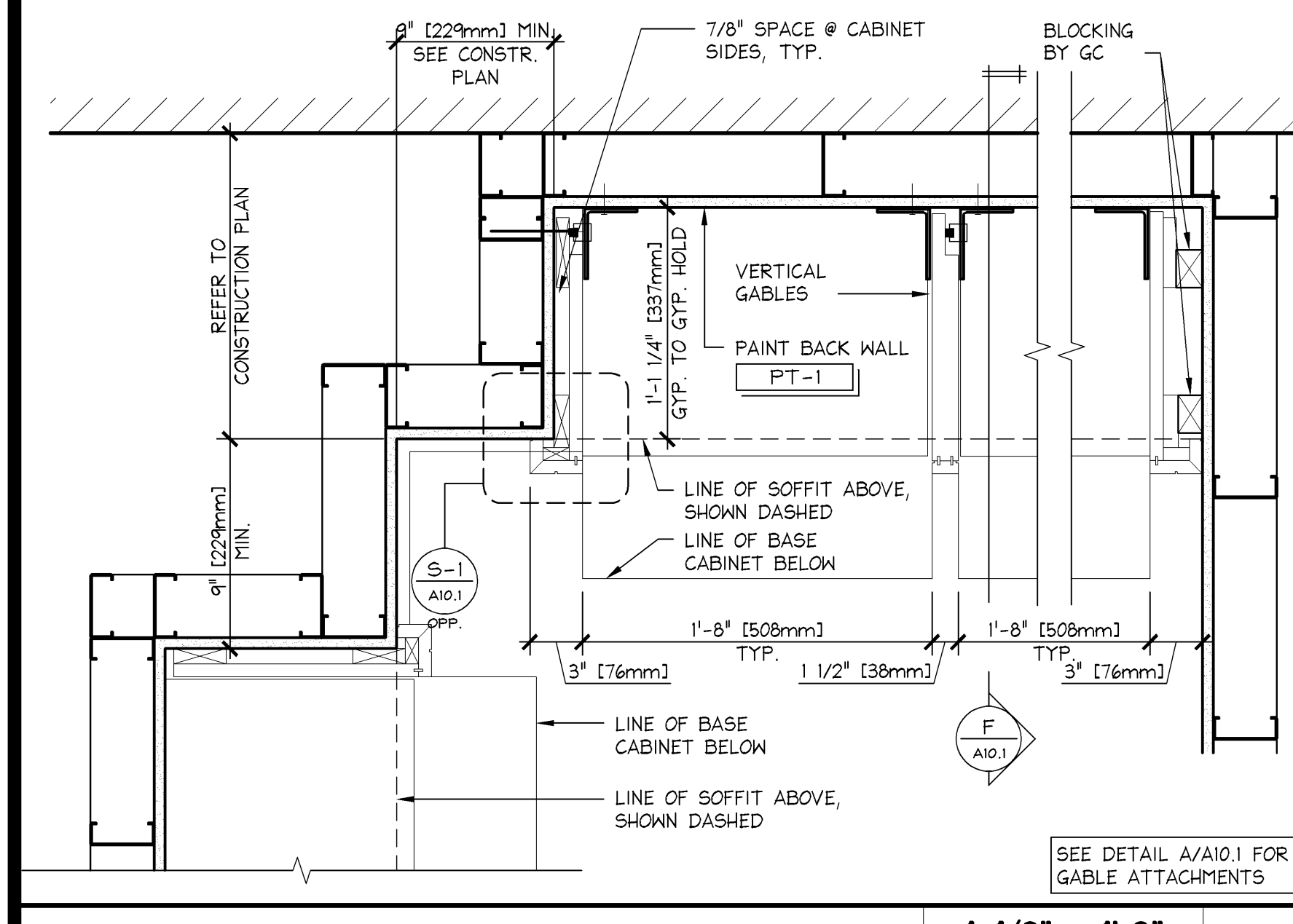


**HINGED MARKETING FRAME INSTALLATION DETAILS**  
6" ± 1'-0"  
42D-A101-M00-DETL  
10.14.11

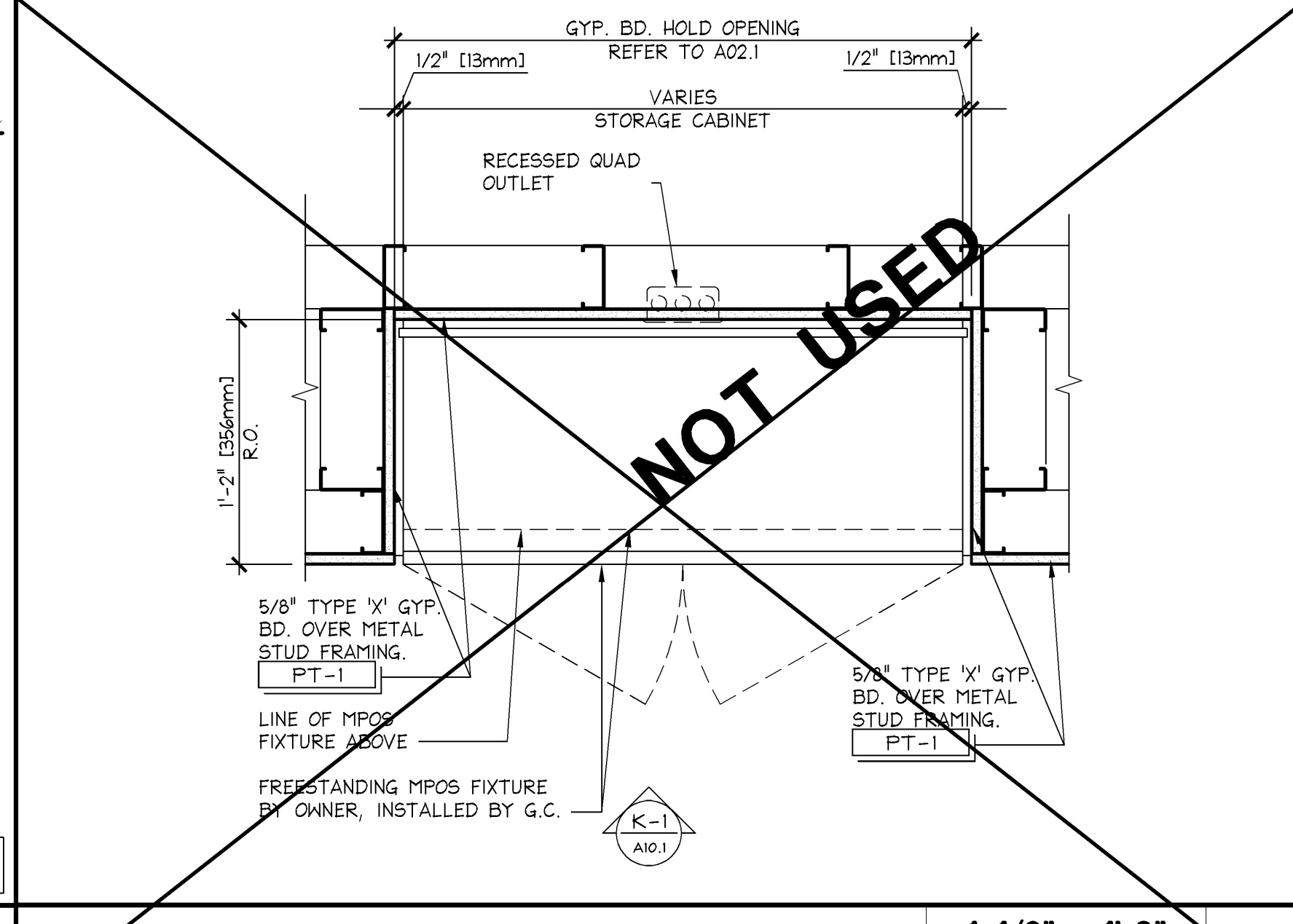


**"UNIT 1" SEISMIC ADDITIONS (HIGH SEISMIC DESIGN CAT D, E & F)**  
1 1/2" ± 1'-0"  
42S-A101-P00-SECT  
01.27.12

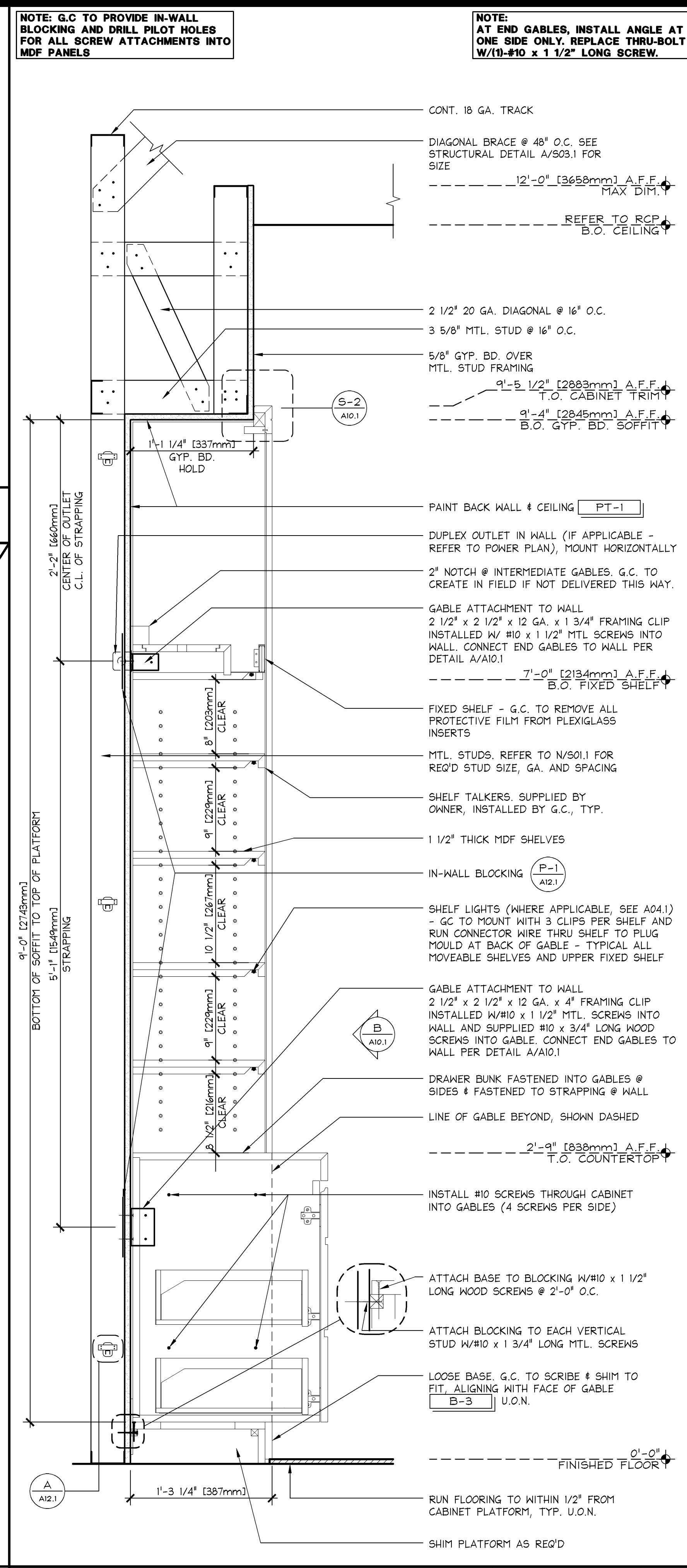
**STORAGE CABINET DETAILS (FF-44)**  
1" ± 1'-0"  
42D-A101-K00-DETL  
01.27.2012



**END CONDITIONS @ "UNIT 1"**  
1 1/2" ± 1'-0"  
42D-A101-N00-DETL  
01.27.12



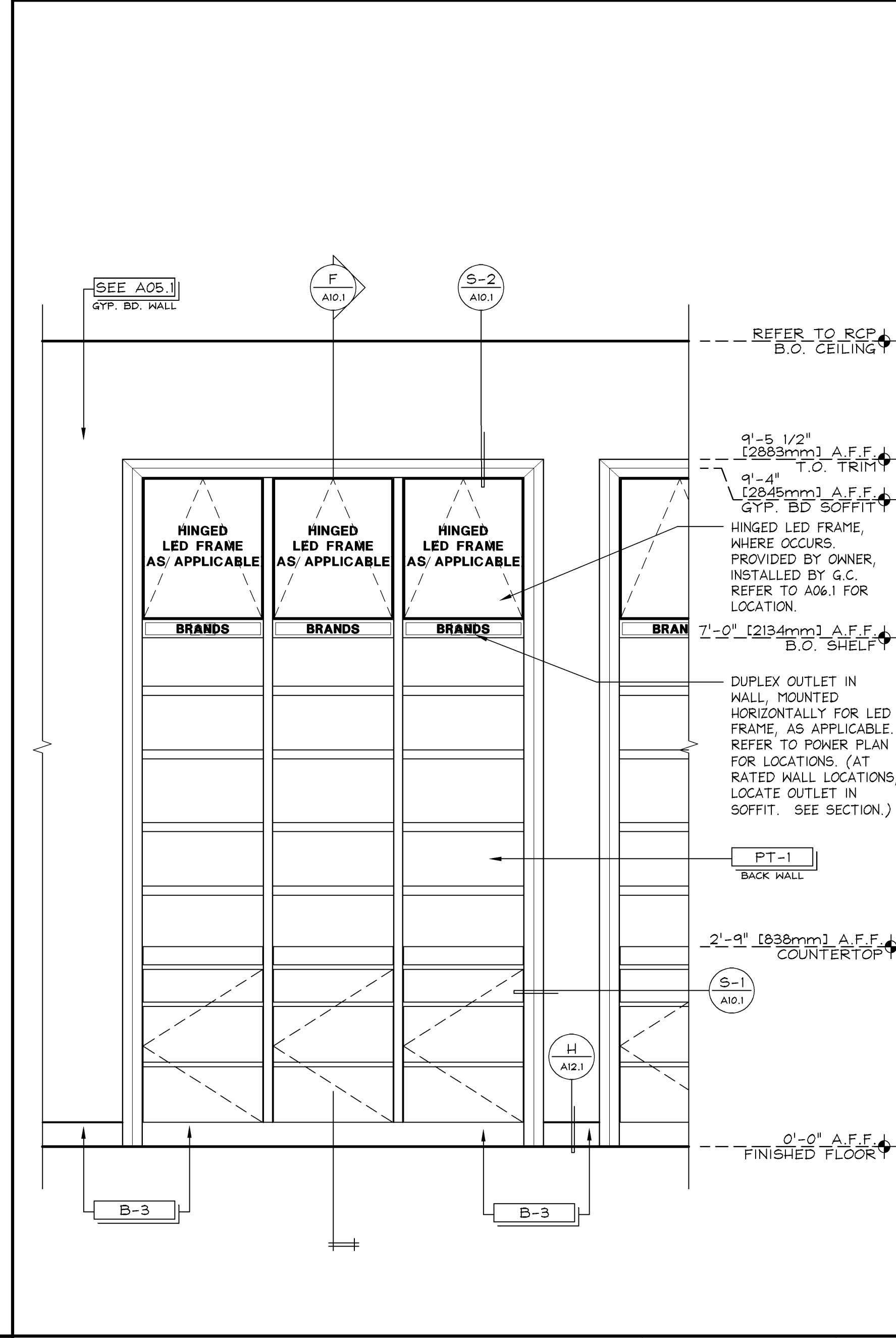
**STORAGE CABINET PLAN (FF-44)**  
1 1/2" ± 1'-0"  
42D-A101-J00-DETL  
01.27.2012



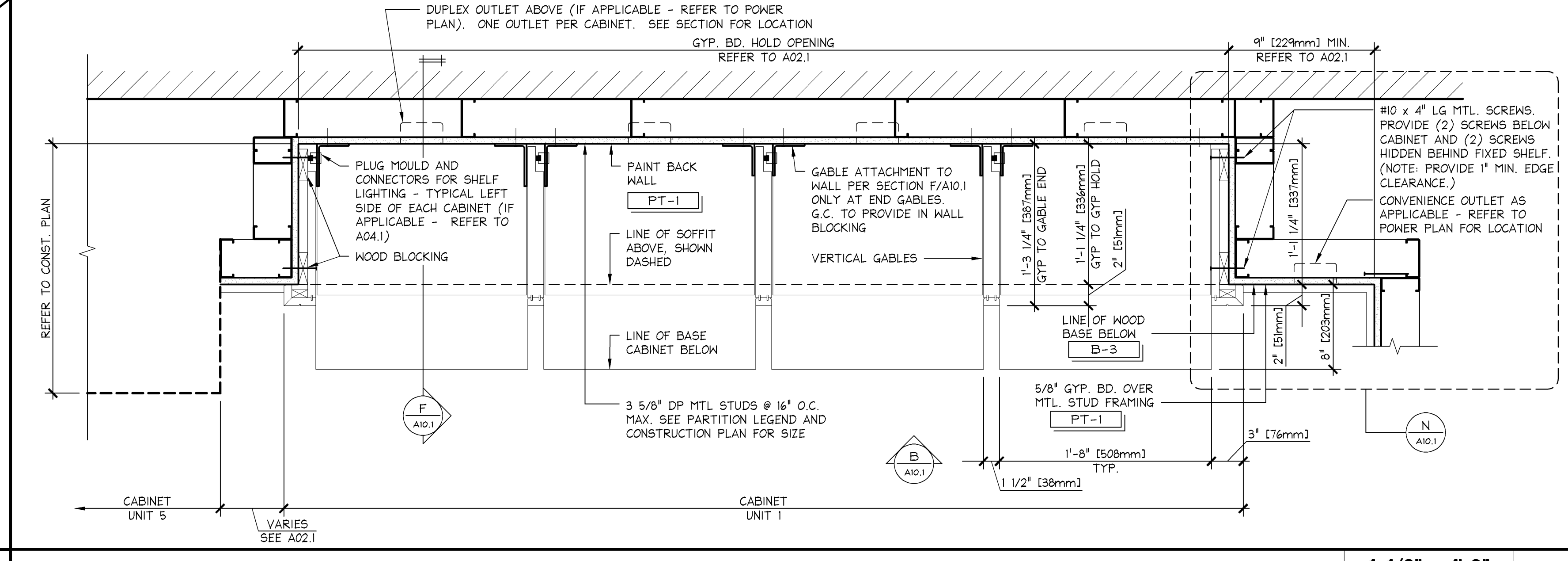
**SECTION @ "UNIT 1"**  
1 1/2" ± 1'-0"  
42S-A101-F00-SECT  
06.08.2012

- UNIT 1 CABINET INSTALLATION GUIDELINES**
- THE SOFFIT HEIGHT SHOULD BE SET FROM THE HIGHEST POINT OF THE SLAB AND MAINTAINED LEVEL THROUGHOUT THE STORE UNLESS NOTED OTHERWISE.
  - FINISHED CABINET BAY DEPTH TO BE 1'-1 1/4" FOR UNIT 1 CABINETS, 1'-5 3/4" FOR UNIT 1H CABINETS.
  - OUTSIDE CORNERS OF GYPSUM BOARD CABINET BAY THAT RECEIVE PERIMETER TRIM DO NOT RECEIVE CORNER BEAD.
  - INSTALL AND SHIM PLATFORMS SO THE TOP OF THE PLATFORM IS 8'-11 3/4" FROM THE UNDERSIDE OF THE SOFFIT. BACK OF PLATFORM TO BE 1/4" AWAY FROM THE FACE OF THE GYPSUM BOARD RECESS.
  - SET VERTICAL GABLES BY SCREWING STEEL ANGLES INTO IN WALL BLOCKING. LEAVE GABLES LOOSE. THERE SHOULD BE A 1/4" GAP BETWEEN THE TOP OF THE GABLE AND THE UNDERSIDE OF THE SOFFIT.
  - INSTALL PERIMETER CABINET TRIM. SLIDE GABLE SO THAT THE FRONT FACE OF THE GABLE ALIGNS WITH THE FACE OF THE TRIM. THIS WILL LEAVE A SMALL GAP BETWEEN THE BACK OF THE GABLE AND THE FACE OF THE GYPSUM BOARD WALL.
  - SCREW STEEL ANGLES TO THE GABLES. SCREWS IN LOWER BRACKET AT GABLE MUST SEAT FLUSH IN COUNTERSINK TO ALLOW SUFFICIENT SPACE TO INSTALL BASE CABINETS.
  - DRILL PILOT HOLE AT 45 DEGREES THROUGH TOP OF CABINET TRIM, BLOCKING AND TOP OF EACH GABLE TO ACCEPT A 3" #10 SCREW.
  - SCRIBE BASE TIGHT TO FLOOR AND INSTALL WITH FACE OF BASE ALIGNED FLUSH WITH FACE OF GABLES.
  - INSTALL BASE CABINETS PER DRAWINGS. THE BASE CABINET SIDES SHALL HAVE EQUAL GAPS BETWEEN THE GABLES AND THE BACK SHALL FIT TIGHT TO THE STEEL ANGLES, LEAVING A SMALL GAP BETWEEN THE CABINET AND THE WALL. USE CAUTION WHEN SCREWING THROUGH CABINET SIDES INTO GABLES TO ENSURE THAT CABINET SIDES DO NOT BOW OUTWARD.
- NOTES: DRYWALL SCREWS ARE NOT ACCEPTABLE FOR ANY STEPS IN CABINET INSTALLATION. DO NOT CAULK THE QUIRK BETWEEN THE WALL AND THE PERIMETER TRIM, UNLESS DIRECTED BY THE OWNER.

**UNIT 1 INSTALLATION GUIDELINES**  
1/4" ± 1'-0"  
42N-A101-D00-NOTE  
12.08.10



**ELEVATION @ "UNIT 1"**  
3/4" ± 1'-0"  
42E-A101-B00-ELEV  
06.08.2012



**ENLARGED PLAN @ "UNIT 1"**  
1 1/2" ± 1'-0"  
42D-A101-A00-DETL  
06.08.2012

**Moody-Nolan**  
responsive architecture  
300 Spruce Street Suite 300  
Columbus, Ohio 43215  
Phone: (614) 461-6664  
Fax: (614) 280-8881  
www.moodynolan.com

**Limited brands**  
LIMITED STORE PLANNING, INC.  
d/b/a STORE DESIGN & CONSTRUCTION  
Three Limited Parkway • Columbus, Ohio 43230  
Telephone: 614.415.7000 • Fax: 614.415.7349

**024200396**

**BATH & BODY WORKS**  
MEMORIAL CITY MALL  
303 MEMORIAL CITY WAY  
HOUSTON, TX 77024

RELO DOWN / NEW PACKAGE:  
EASTON-G GENERATION:  
60685 A/E PROJECT #:

SCOPE: DESIGN TYPE: LS/MC PROJECT #:

REQUIRED BY: DATE:

REVISIONS:

DATE ISSUED: 04/11/2014  
DESIGNED BY: SF  
DRAWN BY: TSG  
CHECKED BY: TBD

**PERIMETER CABINETRY DETAILS**

DRAWING NUMBER:  
**A10.1**